

Eclipse BoostPak

Packaged Gas Booster Systems

Series MR

Version 2

Medium Flow Simplex with Recirculation Loop

Parameter	Specification						
Model Number	MR3314	MR3412	MR4414	MR4617	MR4619	MR4623	MR4628
Assembly Number	10024860	10024861	10024862	10024863	10024864	10024865	10024866
Booster	HB3314-1/2	HB3412-1/2	HB4414-1	HB4617-1	HB4619-2	HB4623-5	HB4628-5
Minimum Flow (cfh) ^a	750	1,700	3,000	4,600	3,600	11,000	4,900
Maximum Flow (cfh) ^a	5,300	11,600	20,400	23,000	17,800	33,000	14,600
Pressure Boost ^a	9	7	7	13	18	26	34
Turndown	7:1	7:1	7:1	5:1	5:1	3:1	3:1
Primary Voltage	b, c, d, e	b, c, d, e	c, d	c, d	c, d	c, d	c, d
Motor Horsepower	1/2	1/2	1	1	2	5	5
Approximate Wt. (lbs) ^f	670	700	790	980	1,080	1,300	1,450

Notes: a Ratings are nominal, in CFH of natural gas, at standard conditions and depend on customer interface piping.

b 115/230 VAC, 1Φ, 60hz

c 230/460 VAC, 3Φ, 60hz

d 208 VAC, 3Φ, 60hz

e 208 VAC, 1Φ, 60hz

f Weight is approximate

NEMA 4 rating; NEMA 7 rating option available (footprint increases with this option)

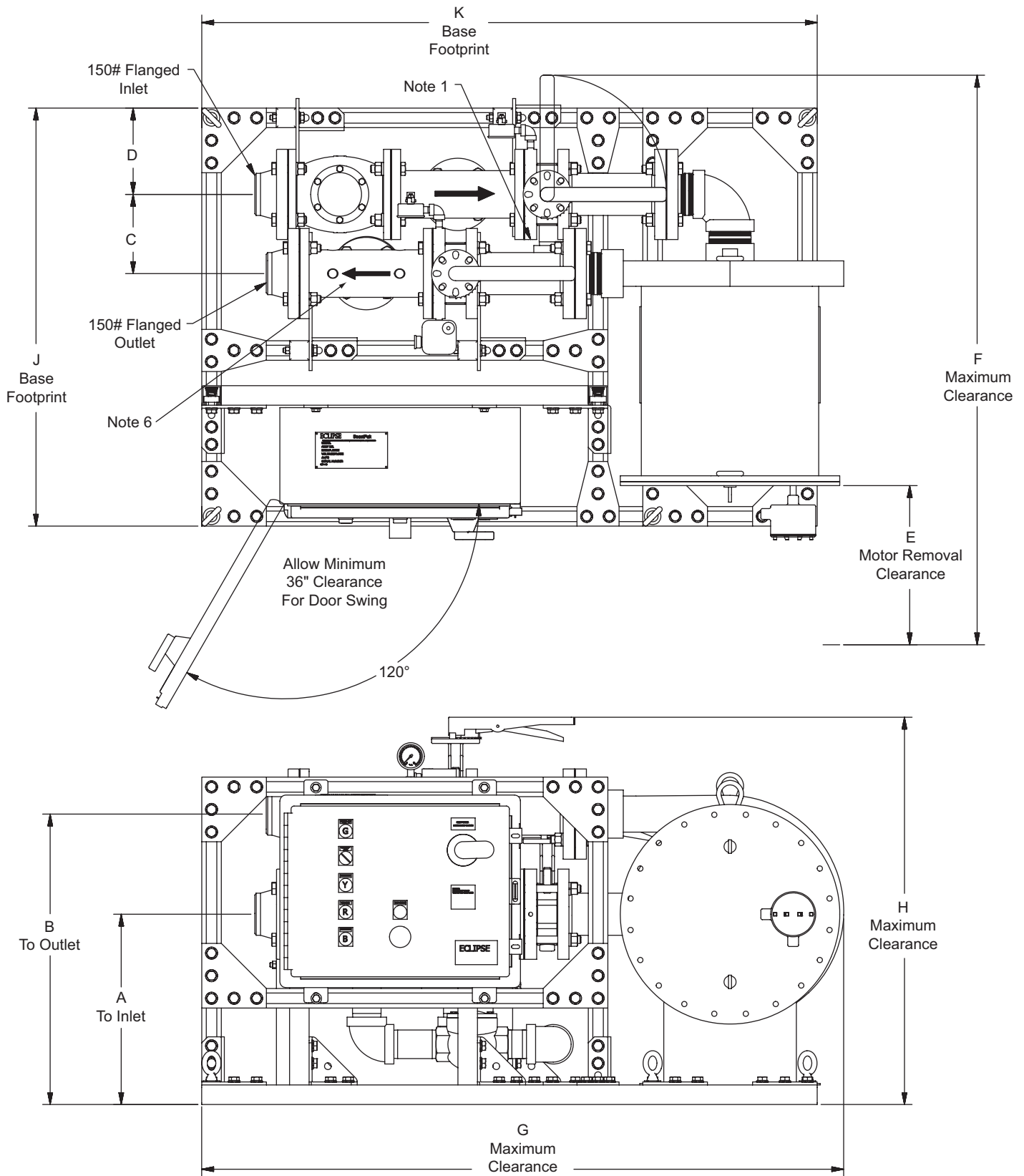
Dimensional Information in Millimeters (in)

BoostPak	Flange Sizes (150#)		Connection Data			
	Inlet	Outlet	A	B	C	D
MR3314	3	3	402 (15.8)	613 (24.1)	167 (6.6)	182 (7.2)
MR3412	4	3	364 (14.3)	553 (21.8)	224 (8.8)	182 (7.2)
MR4414	4	4	402 (15.8)	613 (24.1)	203 (8)	185 (7.3)
MR4617	6	4	435 (17.1)	684 (26.9)	307 (12.1)	187 (7.4)
MR4619	6	4	524 (20.6)	822 (32.4)	308 (12.1)	187 (7.3)
MR4623	6	4	549 (21.6)	895 (35.3)	322 (12.7)	180 (7.1)
MR4628	6	4	625 (24.6)	1054 (41.5)	316 (12.4)	185 (7.3)

BoostPak	Maximum Envelope					
	E	F	G	H	J	K
MR3314	737 (29)	1603 (63.1)	1356 (53.4)	818 (32.2)	883 (34.7)	1300 (51.2)
MR3412	762 (30)	1700 (66.9)	1526 (60.1)	758 (29.8)	983 (38.7)	1475 (58.1)
MR4414	762 (30)	1664 (65.5)	1531 (60.3)	837 (32.9)	983 (38.7)	1475 (58.1)
MR4617	762 (30)	1773 (69.8)	1836 (72.3)	907 (35.7)	1083 (42.6)	1792 (70.6)
MR4619	711 (28)	1683 (66.3)	1890 (74.4)	1046 (41.2)	1083 (42.6)	1802 (70.9)
MR4623	889 (35)	2027 (79.8)	1946 (76.6)	1119 (44)	1158 (45.6)	1881 (74.1)
MR4628	965 (38)	2162 (85.1)	2027 (79.8)	1277 (50.3)	1253 (49.3)	1958 (77.1)

Notes: Dimensions shown are nominal. Variations of 2% may occur due to thread engagement and assembly tolerances.

**Dimensions in Millimeters (inches)
Medium Flow Simplex with Recirculation Loop**



Note 1 Pressure Switch Kit location when factory mounted.

Note 2 When Pressure Switch Kit is supplied loose by Eclipse, it is to be installed by customer in accordance with local codes.

Note 3 Customer is to secure Boostpak to foundation through unistrut base (customer drilled holes).

Note 4 Dimensions shown are nominal. Variations of 2% may occur due to thread engagement and assembly tolerances.

Note 5 Ensure proper clearances for motor removal.

Note 6 Flow control kit location, when factory mounted.

Data 630-3 12/8/2008





Offered By:

Power Equipment Company
2011 Williamsburg Road
Richmond, Virginia 23231
Phone (804) 236-3800
Fax (804) 236-3882

www.peconet.com